

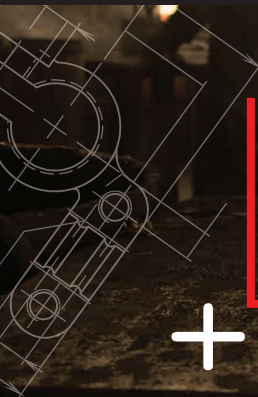


EXTRATECH 2001 (PTY) LTD

Member of the Redman Group

REDMAN • GROUP

EXPORT CATALOGUE



The Foundry was established in 1972 and since then has become the leading manufacturer of brass battery terminals in Africa. The Redman Brand carries a wide range of battery terminals and other products to suit all applications in the Automotive and Transport After-market industry.

We guarantee excellent connectivity and longevity with our SOLID BRASS products manufactured over decades for consistency and best quality.

BUY 'REDMAN' FOR QUALITY

- + A wide range of battery terminals to suit all applications in the automotive and transport after market industry.
- + Each terminal is cast from solid brass in our foundry.
- + We have a 47 year history of consistently manufacturing quality products.
- + Excellent connectivity and long life guaranteed.
- + Proudly manufactured in South Africa.
- + On all electrical installations, advice from an electrical expert or auto-electrician is recommended.





EXTRATECH 2001 (PTY) LTD
MEMBER OF THE REDMAN GROUP

1171 Domkrag Street
Robertville Ext.1 | Roodepoort
1709 | South Africa

P.O. Box 1439 | Florida
1710 | South Africa



REDMAN • GROUP

+27 11 474 8930
extratech@iafrica.com



www.extratech.co.za

INDEX

PRODUCTS

.....

5



SERVICES

.....

28



PROCESS

.....

32



ABOUT US

.....

35



AUTOMOTIVE TERMINALS



BATTERY TERMINALS

LOOK.
IT'S
WHAT
WE DO.



TERMINALS:

Standard Terminals | Heavy Duty Terminals | Light Duty Terminals | 4x4 Terminals | Marine Terminals and many more.

BATTERY WASHERS

BATTERY CAPS (SOLAR BATTERIES)

QUICK RELEASE COUPLERS

CHARGING CLAMPS:

40 Amps | 120 Amps | 500 Amps

BOOSTER CABLES

3 m 25mm² Cu cables with 120 amp clamps

3 m 35mm² Cu cables with 500 amp clamps

BATTERY HOLD DOWNS

410mm Hold Downs

LUGS

40 Amp Lugs | 60 Amp Lugs

All battery terminals are assembled with a M8x28 Bolt and a M8 nut

N01 - / N02 + STANDARD OFFSET BATTERY TERMINAL



FEATURES

Positive and Negative Standard Offset terminals with steel strap - pre packed as a set

BENEFITS

For use on standard motor vehicles up to 2000 cc



N01 - & N02 + / PRESTD PRE PACK

N01BT - / N02BT + STANDARD OFFSET BATTERY TERMINAL WITH BRASS TOP



FEATURES

Positive and Negative Standard Offset terminals with brass top

BENEFITS

Brass top for light trucks and motor vehicles over 2000 cc



N01BT - & N02BT +

N28 - / N29 + HEAVY DUTY OFFSET BATTERY TERMINAL



FEATURES

Positive and Negative Heavy Duty Offset terminals - pre packed as a set

BENEFITS

For use on heavy trucks



N28- & N29+ / PREHD PRE PACK

N30 - / N31 + LIGHT DUTY OFFSET TERMINALS FOR EASTERN IMPORTED VEHICLE



FEATURES

Positive and Negative Small Post
Offset terminals for small post
batteries - pre packed as a set

BENEFITS

For use on imported vehicles



N30- & N31+ / PRELD PRE PACK

N36 - / N37 + EXTRA HEAVY DUTY OFFSET (MAGNIS) TERMINALS WITH DOUBLE STRAP



FEATURES

Positive and Negative Extra Heavy
Duty Offset terminals with double
strap

BENEFITS

For use on extra heavy duty trucks or
earthmoving equipment



N36-2- & N37-2+

N36 - / N37 + EXTRA HEAVY DUTY OFFSET (MAGNIS) TERMINALS WITH SINGLE STRAP



FEATURES

Positive and Negative Extra Heavy
Duty Offset terminals with single
strap

BENEFITS

For use on extra heavy duty trucks or
earthmoving equipment



N36-1- & N37-1+

N27U / B13-20 + 4X4 TERMINALS FOR MULTIPLE ELECTRICAL CONNECTIONS



FEATURES

Universal and Positive terminals with M8 nut - pre packed as a set

BENEFITS

Lug connection to terminals - can fit more than one cable

N27U & B13-20 + / PRE4X4 PRE PACK

N27U - MARINE TERMINAL FOR USE IN BOATING



FEATURES

Universal terminal with M8 brass wingnut - pre packed as a single

BENEFITS

For use on boats

N27U / PREMAR PRE PACK

B13-38 + TERMINALS WITH BRASS M8 WINGNUT



FEATURES

Positive terminal with brass M8 wingnut

BENEFITS

Lug connection

B13-38+

N14 - / N15 + BACK ENTRY BATTERY TERMINALS



FEATURES

Positive and Negative Back entry terminals with steel strap

BENEFITS

To be used on standard vehicles



N14- & N15+

N13U BACK ENTRY BATTERY TERMINAL



FEATURES

Universal Back Entry terminal with steel strap

BENEFITS

To be used on standard vehicles



N13U

N38 - / N39 + HEAVY DUTY (MAURITIUS) BATTERY TERMINALS



FEATURES

Positive and Negative Heavy Duty Side Entry (Mauritius) terminals with M6 x 12 screws to screw down cable

BENEFITS

Heavy Duty vehicles



N38- & N39+

N50 - / N51 + HEAVY DUTY TERMINALS FOR BUSES AND TRUCKS



FEATURES

Positive and Negative Heavy Duty terminals with M12x20 bolt

BENEFITS

For use on trucks and busses



N50- & N51+

N52 - / N53 + MULTI CABLE ATTACHMENT BATTERY TERMINALS



FEATURES

Positive and Negative terminals fitted with a M10 Stud and M10 nut

BENEFITS

Special requirement



N52 - & N53 +

N54 - / N55 + MULTI CABLE BATTERY TERMINALS



FEATURES

Positive and Negative terminals with multiple cable entry ports

BENEFITS

For use when multiple cables need to be attached to battery



N54- & N55+

B13-5(A28)U UNIVERSAL CRIMP BATTERY TERMINAL



FEATURES

Universal Crimp terminal with 6mm to 7mm cable entry

BENEFITS

Can crimp terminal onto cable



B13-5 (A28)U

B13-7(N23)- / + B13-8(N24)+ EXTRA HEAVY DUTY SOLDER BATTERY TERMINALS



FEATURES

Positive and Negative Extra Heavy Duty Solder terminals available in L/H and R/H

BENEFITS

Can solder cable onto terminal



B13-7(N23)- & B13-8(N24)+

B13-12+ / B13-13- HEAVY DUTY CRIMP BATTERY TERMINALS



FEATURES

Positive and Negative Heavy Duty Crimp terminals with 8mm to 10mm cable entry

BENEFITS

Can crimp terminal onto cable



B13-12+ & B13-13-

N56U RESCUE BATTERY TERMINAL



FEATURES

Universal Offset terminal with M6x12 screw to fasten terminal onto battery pole

BENEFITS

To use in emergencies when battery pole is damaged



PREN56 PRE PACK

All battery terminals are assembled with a M8x28 Bolt with a M8 nut



AUTOMOTIVE ACCESSORIES



40AMP OPEN LUG**FEATURES**

Steel open lug with 8mm hole plated zinc yellow - pre pack x 5 units

BENEFITS

Crimp Lug onto Cable



PRE40L PRE PACK / BCL4

60AMP OPEN LUG**FEATURES**

Steel open lug with 10mm hole plated zinc clear - pre pack x 5 units

BENEFITS

Crimp Lug onto Cable



PRE60L PRE PACK / BCL5

BATTERY CAPS M10 SCREW ON CAPS POSITIVE AND NEGATIVE**FEATURES**

Battery M10 screw on caps - positive and negative

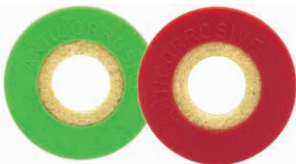
BENEFITS

To convert a Threaded Stud battery pole to fit a standard battery terminal



PREBC PRE PACK

BATTERY WASHER SET



FEATURES

Red and Green Corrosion washers
pre packed as a set

BENEFITS

Protect battery against corrosion



PREBW PRE PACK

40AMP CLAMP BLACK & RED



FEATURES

Black and Red charging clamps -
pre packed as a set or loose

BENEFITS

Various applications



PRE40 PRE PACK / BCC1 RED / BCC1 BLACK

120AMP CLAMP BLACK & RED



FEATURES

Black and Red clamps - pre packed
as a set or loose

BENEFITS

Various applications



PRE120 PRE PACK / BCC3 RED / BCC3 BLACK

500AMP CLAMP BLACK & RED



FEATURES

Black and Red Heavy Duty clamps - pre packed as a set or loose

BENEFITS

Used with heavy duty cables



PRE500 PRE PACK / BCC4 RED / BCC4 BLACK

BATTERY HOLD DOWN 410MM WITH M6 J BOLTS AND M6 WINGNUTS



FEATURES

Steel battery Hold Down 410mm long with a set of M6 J bolts and M6 wingnuts

BENEFITS

To keep battery securely in place



PRE410 PRE PACK

QUICK RELEASE



FEATURES

Solid Brass Quick Release - pre packed in a set of 2

BENEFITS

To easily release battery terminal from battery



PREQR PRE PACK



ELECTRICAL COMPONENTS



BRASS CASTING

WE
KEEP
THAT
SPARK
GOING.



These products gives the potential customer an idea of the type of electrical brass components that is cast by gravity die casting and pressure die casting methods in the Foundry

Specific enquiries will be quoted on an ad-hoc bases on the supply of a technical drawing or sample

1½" ELEMENT CAP (BRASS BOSS) BSP SOLID



FEATURES

Solid brass element cap
- (60A/F x 17L)

BENEFITS

For use on urns



B CAP HEX 1 ½"

1¼" ELEMENT CAP (BRASS BOSS) BSP BLANK OR WITH 6 X HOLES



FEATURES

Brass element cap
- (55A/F x 22L)

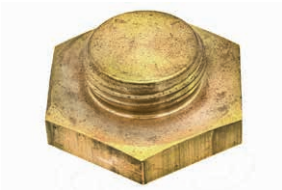
BENEFITS

For use on urns



B CAP HEX 1 ¼"

1" ELEMENT CAP (BRASS BOSS) BSP SOLID



FEATURES

solid brass element cap
- (52A/F x 17L)

BENEFITS

For use on urns



B CAP HEX 1"

2" ELEMENT CAP (BRASS BOSS) BSP BLANK OR WITH 6 X HOLES



FEATURES

Brass element cap
- (87A/F x 24L)

BENEFITS

For use on urns



B CAP HEX 2"

1 1/4" BACK NUT BSP WASHER FACE 6 X SIDES



FEATURES

Brass washer face back nut (6 sides)

BENEFITS

For use on urns



NUT LOCK 1 1/4"

EARTH ROD CLAMP 70MM



FEATURES

Solid brass with brass M10x28 bolt

BENEFITS

Earthing industry



EAR R C EXT

EARTH ROD COUPLER M16



FEATURES

Solid brass with M16 threaded shaft

BENEFITS

Earthing industry



COUPLER EXT

FORK ASSEMBLED



FEATURES

Solid brass made to customer specification and assembled to customer specification

BENEFITS



SAMPLE ITEM – CUSTOMER RELATED

FORK UN-ASSEMBLED



FEATURES

Solid brass made to customer specification

BENEFITS



SAMPLE ITEM – CUSTOMER RELATED

HINGE



FEATURES

Solid brass made to customer specification

BENEFITS

Special requirement



SAMPLE ITEM – CUSTOMER RELATED

M16 CLAMP TOP + BOTTOM



FEATURES

Solid brass available in brass only or plated to specification

BENEFITS



CLAMP-T-M16 / CLAMP-B-M16

TOP FERRULE



FEATURES

Solid brass made to customer specification

BENEFITS



SAMPLE ITEM – CUSTOMER RELATED

PACKING GLAND NO.3



FEATURES

Solid brass top and bottom gland with 2 x M8x80 threaded rod plated zinc with 4 x brass M8 nuts

BENEFITS

Used in mining industry



GLAND P 25MM

PG CLAMP (LIGHT) TOP + BOTTOM



FEATURES

Solid brass PG clamps female (bottom) and male (top)

BENEFITS



PG-L-M / PG-L-F



MISCELLANEOUS CASTINGS



BILTONG CUTTER



FEATURES

Solid brass components with stainless steel blade fitted on wooden base

BENEFITS

Promotional / Gift industry



BIL-SLICER

NUT CRACKER



FEATURES

Solid brass components fitted on wooden base

BENEFITS

Promotional / gift industry



NUT/CR

SPRINKLER DISPLAY



FEATURES

solid brass

BENEFITS

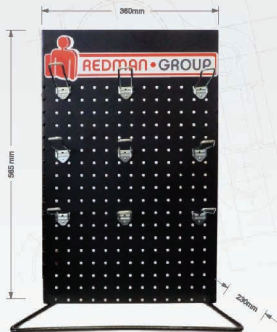
General Agricultural irrigation



RAINEX 30 IMPACT SPRINKLER HEAD

REDMAN GROUP - GENERAL DISPLAY STANDS FOR BATTERY TERMINALS

DISPLAY STANDS



Small Counter Stand for Battery Terminal Pre-Packs



Large Stand for Battery Terminal Pre-Packs



Medium Stand for Battery Terminal Pre-Packs



**WHAT SERVICES
WE OFFER**



AUTOMOTIVE PRODUCTS MANUFACTURED

Extratech 2001 (Pty) Ltd is the largest battery terminal manufacturer in South Africa. A sizable percentage of our terminals are exported to many parts of the world. Our terminals are also available through selected retail outlets distributed through the Redman group locally.

We also...

- **Manufacture made up cables, jumper leads from 100 amps to 500 amps in different lengths, battery hold downs, pressed lugs and products for the local and export markets.**
- **Extensive Range of Battery Terminals to suit all Applications.**
- **Terminals are cast from Solid Brass**
- **Excellent Connectivity and long life guaranteed**
- **South African Manufactured Product**
- **Distributed via the REDMAN Group**



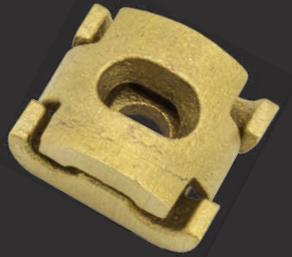
ELECTRICAL

For many years Extratech 2001 (Pty) Ltd has been one of the principal component manufacturers for customers servicing the Electrical industry.

AGRICULTURAL / OTHER INDUSTRIES

Redman produces its own exclusive line of irrigation equipment. One of these is the "Rainex 30" Solid Brass impact sprinkler, which will be available through selected retail outlets. Supplier To:

- **General Manufacturing industries**
- **Agricultural Machinery manufacturers**
- **Leisure and Sport Industries.**





PROCESS



MANUFACTURING PROCESS



Deliver to approved technical drawing / sample specification



Deliver on agreed deadlines



Quality products manufactured from us to you.



We partner with our customers to solve their manufacturing challenges and requirements



Official negotiated price will be final on agreed Term and Conditions.



The Manufacturing Process that our own products, and that of our customers follow, vary according to the design and the customer specifications of the product.

Our Casting Solutions include the following:

DRAWING / SAMPLE:

Customers can either supply us with a drawing for the product to be manufactured, or supply us with a sample of their product. For quotation purposes we can work from either.

TOOLING: (Customers have various options here)

Supply us with their own tools and dies which we can modify to fit our machines.

They can use our in-house toolroom facility to make and maintain their tools and dies with various payment options.

PRODUCING SAMPLES:

After the initial design on the approved drawing or sample provided, we produce a sample to make sure that the product conforms to the customer specification and needs.

PRODUCTION:

Once the samples have been approved by the customer, we go into full production on the product as to the customer requirements.

SHOT BLASTING / FETTLING:

Most Products go through a sand blasting process to improve the surface finish of the product. In certain products there is fettling required where the product is either hand filed or filed against a high speed abrasive belt that grinds down the excess flash and material from the product.

MACHINING / ASSEMBLY:

Certain products have higher tolerances and therefor need to go through a machining process to obtain the required accuracy.

Certain products require the additional processes of CNC machining to conform with more accurate tolerances. In addition, certain assembly work is required on production units as well as packaging, boxing and labeling for shipment. This is all catered for in-house

OUR STORY



ISO 9001 - 2015

BUY REDMAN FOR QUALITY.

Everything at our company is done based on the principle that our CEO Martin Krige learned many years ago - **"If you do something, do it properly."**

A German business man, Harald Müller established Extratech over 47 years ago. Over the years a successful foundry business was built on the foundations of a no-nonsense approach to giving customers a high-quality product with a service to match.

The company is now part of the Redman Group of companies and continues Müller's passion for manufacturing excellence, attention to detail and retaining high standards of quality in all manufactured products. We upgraded to an ISO 9001-2015 quality listing in 2018 to back up our claims of manufacturing excellence with consistently high quality products.

We are passionate about local manufacturing and aim to retain our share in supplying components to the local and international electrical, automotive, agricultural and other industry markets, and increase our share through competing aggressively with imports on pricing and especially on quality.

We also pride ourselves on being compliant with all Government Legislation especially in the fields of BEE, Employment Equity, CPA (Consumer Protection Act) amongst others. We have a proud record of having loyal customers who we have partnered with over many years.



“GOING THE EXTRA MILE” CUSTOMER TESTIMONIALS

- “We pride ourselves on supplying quality parts and your products offer that” - Field Auto
- “Price is GOOD” - Eberhardt Martin
- “Service, stock levels, price, people” - EMC
- “Excellent service” - Flexicor Cables
- “Quality, price, service” - Lectrotech
- “We have a good relationship with Extratech and will continue as such” - JF Equipment
- “Service is great, I have no problems at all” - Cullin Africa
- “Good quality, good service, quick delivery” - Elmech
- “Service and Quality” - SVR Electrical





EXTRATECH 2001 (PTY) LTD



REDMAN • GROUP

+27 11 474 8930

extratech@iafrica.com

